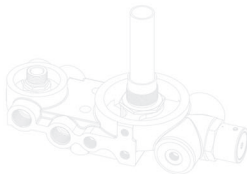
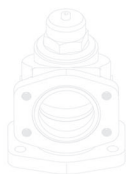
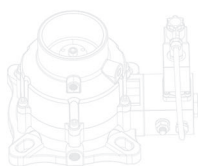


**ARNIKA**  
— COMPANY —  
WELL DESIGNED / WELL MADE

Eagurt Machinery Manufacture CO.,LTD



**2020**

[WWW.ARNKACO.COM](http://WWW.ARNKACO.COM)

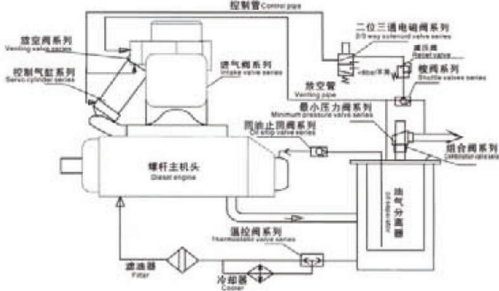


**P**  
**roduce**

01

02 | 03

1. Numerical Control center
2. Numerical Control center
3. Assembly center



压缩机功率KW Compressor power	7.5	11	15	18.5	22	30	37	45	55	75	90	110	132	160	220	250
HF-40/HJF45																
HF-50/HJF55																
HF-65/HJF70																
HFD-65																
HF-85/HJF90																
HF-120																
HF-160																
MPVLC-20																
MPVLC-25																
MPVLC-32																
MPVLC-40B																
MPVLC-50B																
MPVLC-50F																
MPVLC-65B																
MPVLC-65F																
MPVLC-80F																
TV1/2																
TV3/4																
Tv1																
TV1-1/4																
TV1-1/2																
TVFT1/2																
TVFT3/4																
TVFT1																
TVFT1-1/4																
TVFT1-1/2																

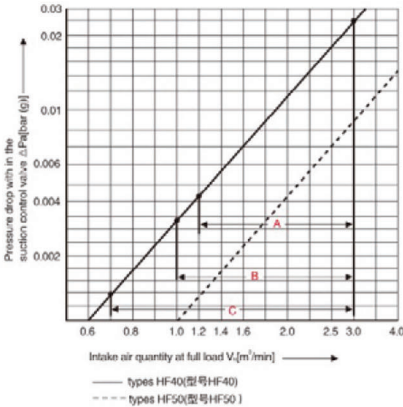
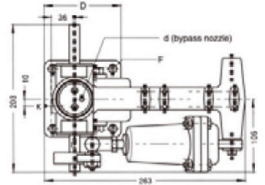
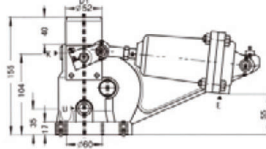
Manufacturer Part of Screw Compressor



HF40



HFB40



型号 Type	法兰尺寸 Dmm Flange size	安装孔距 F mm Installation distance	安装孔 4- $\phi$ Mounting holes	空腔接口 D1 Air filter interface
HF-40B	100x100	105 -115	螺孔 $\phi 12$	52
HF-40J	100x100	105 -115	螺孔 $\phi 12$	50
HF-40A	135x135	$\phi 150$	4 - $\phi 18$	52
HF-40D	135x135	$\phi 150$	4 - $\phi 18$	55
HF-40F	135x135	$\phi 150$	4 - $\phi 18$	50

通径 Nominal diameter	单位(mm)	40
型号 Type		HFG40用于常闭进气控制阀 HFO40用于常开进气控制阀
工作压力 Working pressure	bar(g)	最高16 up to 16
温度范围 Temperature range	$^{\circ}\text{C}$	-20 ~ +90 防止意外停止最高140 suction duct of air end(+140 in case of an emergency stop)
控制参数 control characteristic		对角最大45度 up to 45 opening angle approximately logarithmic
KVA值	$\text{m}^3/\text{h}$	44, 标准气压下的进气 for air intake from free atmosphere
进气量 Air intake capacity	$\text{m}^3/\text{min}$	压差和理论应用范围请看图Pressure drop and proposed range of application see diagram
理论容积理论容积		控制片理论钻孔直径为2mm Idle drilling in the control disc =2mm 1)
尺寸 Dimensions	mm	见安装图 See installation drawing
联接 Connections		压缩机进口法兰 Compressor suction flange: $D=102*102\text{mm}$ F=4 罗丝孔 (直径, 螺距可根据客户的需要订做) F=4 bolt holes(diameter, pitch circle diameter suitable for air type specified in order) 信号压力进口 Signal pressure inlet: E= G 1/8 其它连接尺寸 Additional connections: K= G 1/4 W= G 1/8
安装角度 Installation attitude		进气连接角度 With hose coupling facing upwards( $\pm 20$ )
伺服气缸 Servo cylinder		HFA25用于无极控制和二级控制蝶式进气阀, 弹簧有多种可选用 HFC25
控制信号 Control signal	bar(g)	平衡弹簧最高压力: 用于两级控制 Equivalent spring, maximum pressure: 7 for two point 用无极控制(100-0%) 10 for stepless control (100 to 0%) 过路空气建议按照DIN ISO8573-1中的5级标准选择推荐压缩空气品质 according to DIN ISO8573-1 class 5
材质 Materials		阀盖: 铝合金 Housing parts: aluminium alloy 内部零件: 铝合金, 防腐耐钢材, 铜板, PTFE混合轴承, 氟橡胶密封, 丁基橡胶膜片 Internal parts: Aluminium alloy, corrosion resistant steel/plated steel, PTFE compound bearings, Fluon sealings, Perbunan diaphragm
重量 Weight	kg	3.1

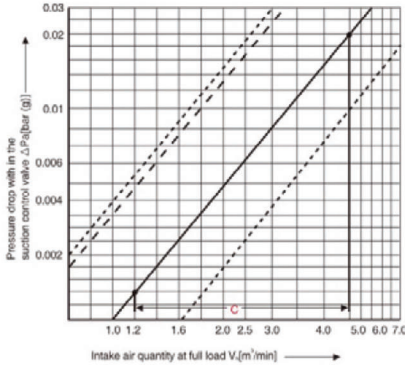
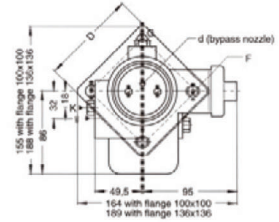
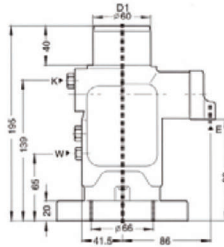




HF50



HFBS0



型号 Type	法兰尺寸 Dmm Flange size	安装孔距 F mm Installation distance	安装孔 4-Φ Mounting holes	空腔接口 D1 Air filter interface
HF-50	136x136	150	4-Φ18	60
HF-50A	136x136	135-150	腰孔Φ18	60

- types HF50(型号HF50)
- - - - flange version HF40(HF40的法兰)
- · · · · female thread design of HF40(HF40的螺纹设计)
- · · · · types HFBS(型号HFBS)

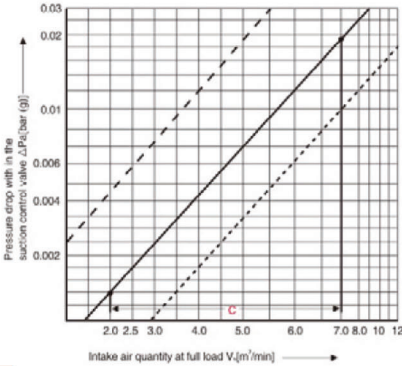
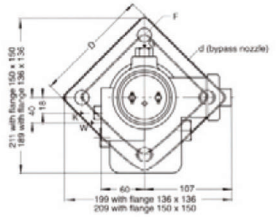
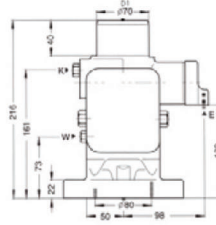
通径 Nominal diameter	单位(mm)	50
型号 Type		HFG50用于常闭进气控制阀 HFO50 用于常开进气控制阀
工作压力 Working pressure	bar(g)	最高16 up to 16
温度范围 Temperature range	°C	-20 ~ +90 防止意外停止最高140 suction duct of air end(+140 in case of an emergency stop)
控制参数 Control characteristic		对角最大45度 up to 45 opening angle approximately logarithmic
KVA值 KVA-Value	m³/h	72 标准气压下的进气 for air intake from free atmosphere
进气量 Air intake capacity	m³/min	压差和理论应用范围请见图 Pressure drop and proposed range of application see diagram
理论容积 Intake capacity		控制片理论钻孔直径为2mm Idle drilling in the control disc d=2mm 1)
尺寸 Dimensions	mm	见安装图 See installation drawing
联接 Connections		压缩机进口法兰 Compressor,suction flange:D=136x136mm, 100x100mm F=4 罗栓孔 (直径, 螺距可根据客户的需要订做) F=4 bolt holes(diameter,pitch circle diameter suitable for air type specified in order) 信号压力进口 Signal pressure inlet: E= G 1/8 其它连接尺寸 Additional connections: G= G 1/8 K= G1/4 W= G 1/8
安装角度 Installation attitude		进气连接角度 With hose coupling facing upwards(±20°)
伺服气缸 Servo cylinder		integrated rotary cylinder for two point control of the butterfly type control dumper
控制信号 Control signal	bar(g)	3-16 过滤的空气建议根据DIN ISO8573-1中的5级标准来选择 recommended compressed air quality according to DIN ISO8573-1, class 5
材料 Materials		阀座: 铝合金 Housing parts:aluminium alloy 内部部件: 铝合金, 防腐不锈钢, 钢板, PTFE混合轴承, 氟橡胶密封, 丁苯橡胶膜片 Internal parts:Aluminium alloy, corrosion resistant steel,plated steel,PTFE-compound bearings, Viton sealings,Perbunan diaphragm
重量 Weight	kg	2.5 执行与法兰136*136毫米。 2.1执行与法兰100*100毫米 2.5 execution with flange 136*136mm. 2.1 execution with flange 100*100mm



HFD65



HFDB65

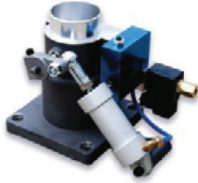


型号 Type	法兰尺寸 Dmm Flange size	安装孔距 Fmm Installation distance	安装孔 4-Φ Mounting holes	空滤接口 D1 Air filter interface
HF-D65	150x150	Φ170	4-Φ18	70
HF-D65A	150x150	Φ160	4-Φ18	70
HF-D65B	150x150	160-170	膜孔Φ18	70

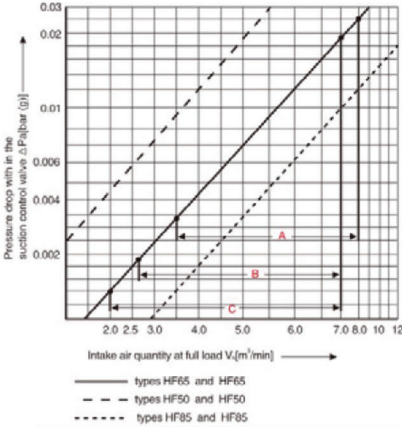
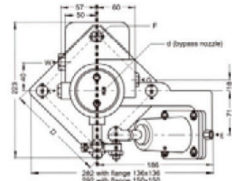
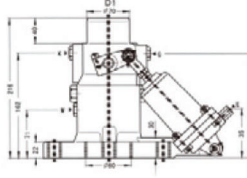
通径 Nominal diameter	单位(mm)	65
型号 Type		HFG65用于常闭进气控制阀 HFO65用于常开进气控制阀
工作压力 Working pressure	bar(g)	最高16 up to 16
温度范围 Temperature range	°C	-20 ~ +90 防止意外停止最高140 suction duct of air end(+140 in case of an emergency stop)
控制参数 control characteristic		对角度大45度 up to 45° opening angle approximately logarithmic
KVA值	m <sup>3</sup> /h	120, 标准气压下的进气 for air intake from free atmosphere
进气量 Air intake capacity	m <sup>3</sup> /min	压差和理论应用范围请看图 Pressure drop and proposed range of application see diagram
理论容积 Idling capacity		控制片理论钻孔直径为 3mm Idle drilling in the control disc d=3mm <sup>①</sup>
尺寸 Dimensions	mm	见安装图 See installation drawing
联接 Connections		压缩机进口法兰 Compressor, suction flange: D=136x136mm, 150x150mm F=4 罗栓孔直径, 螺距可根据客户的需要订做 F=4 bolt holes(diameter,pitch circle diameter suitable for air type specified in order) 信号压力进口 Signal pressure inlet: E=G 1/8 其它连接尺寸 Additional connections: G=G 1/8 K=G1/4 W=G 1/8
安装角度 Installation attitude		进气连接角度 With hose coupling facing upwards(±20°)
伺服气缸 Servo cylinder		integrated rotary cylinder for two point control of the butterfly type control damper
控制信号 Control signal	bar(g)	3-16. 过滤的空气建议根据DIN ISO8573-1中的5级标准来选择 recommended compressed air quality according to DIN ISO8573-1.class 5
材质 Materials		壳体: 铝合金 Housing parts:aluminium alloy 内部零件: 铝合金, 防腐不锈钢, 钢板, PTFE混合轴承, 氟橡胶密封, 丁苯橡胶膜片 Internal parts:Aluminium alloy, corrosion resistant steel,plated steel, PTFE-compound bearings,Viton sealings,Perbanane diaphragm
重量 Weight	kg	3.7执行与法兰136*136毫米。 3.9执行与法兰150*150毫米 3.7 execution with flange 136*136mm. 3.9 execution with flange 150*150mm



HF65



HFB65



型号 Type	法兰尺寸 Dmm Flange size	安装孔距 Fmm Installation distance	安装孔 4-Φ Mounting holes	空滤接口 D1 Air filter interface
HF-65B	150x150	Φ170	4-Φ18	70
HF-65C	135x135	Φ135	4-Φ14	70
HF-65D	150x150	Φ170	4-Φ18	80
HF-65I	150x150	Φ170	4-Φ14	80
HF-65R	135x135	Φ150	4-Φ14	70
HF-65E	135x135	Φ150	4-Φ18	80

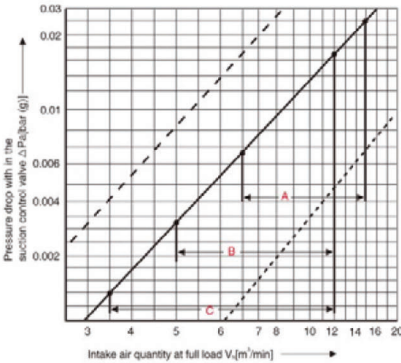
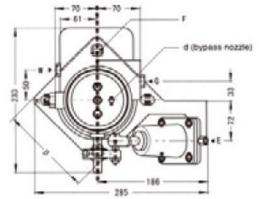
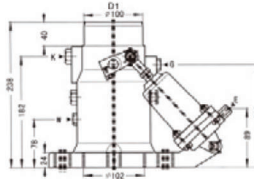
通径 Nominal diameter	单位(mm)	65
型号 Type		HFG65用于常闭进气控制阀 HFO65用于常开进气控制阀
工作压力 Working pressure	bar(g)	最高16 up to 16
温度范围 Temperature range	°C	-20~+90 防止意外停止最高140 suction duct of air end(+140 in case of an emergency stop)
控制参数 control characteristic		对角最大45度 up to 45度 opening angle approximately logarithmic
KVA值	m³/h	120, 标准气压下的进气 for air intake from free atmosphere
进气量 Air intake capacity	m³/min	压差和理论应用范围请看图 Pressure drop and proposed range of application see diagram
理论容积 lifting capacity		控制片理论钻孔直径为3mm Idle drilling in the control disc d=3mm <sup>1)</sup>
尺寸 Dimensions	mm	见安装图 See installation drawing
联接 Connections		压缩机进口法兰 Compressor suction flange: D=136x136mm and 150x150 mm F=4 罗特孔(直径, 螺距可根据客户的需要订做) F=4 bolt holes(diameter, pitch circle diameter suitable for air type specified in order) 信号压力进口 Signal pressure inlet: E=G 1/8 其它连接尺寸 Additional connections: K=G 3/8 G.W=G 1/4
安装角度 Installation attitude		进气连接角度 With hose coupling facing upwards(±20°)
伺服气缸 Servo cylinder		HFC A32用于无级控制和二级控制蝶式进气阀, 弹簧有多种可选用 HFC32
控制信号 Control signal	bar(g)	平衡弹簧最高压力: 用于二级控制 Equivalent spring, maximum pressure: 7for two point 用无级控制(100~0%) 10 for stepless control (100 to 0%) Medium see datasheet R266
介质 Medium		油润滑压缩空气, 过滤的空气建议根据DIN ISO8573-1中的5级标准来选择 only pressurized air, filtered recommended compressed air quality according to DIN ISO 8573-1, class 5
材质 Materials		阀座: 铝合金 Housing parts: aluminium alloy 内部部件: 铝合金, 防腐不锈钢材, 钢板, PTFE混合轴承, 氟橡胶密封, 丁基橡胶膜片 Internal parts: Aluminium alloy, corrosion resistant steel, plated steel, PTFE-compound bearings, Viton sealings, Perbunan diaphragm
重量 Weight	kg	4.8执行与法兰136*136毫米 5.0执行与法兰150*150毫米 4.8 execution with flange 136*136mm. 5.0 execution with flange 150*150mm



HF85



HFB85



型号 Type	法兰尺寸 Dmm Flange size	安装孔距 Fmm Installation distance	安装孔 4-Φ Mounting holes	空滤接口 D1 Air filter interface
HF-85	150x150	Φ 170	4 - Φ 18	100
HF-85A	150x150	Φ 160	4 - Φ 18	100
HF-85B	150x150	Φ160-170	4腰孔 Φ 18	100
HF-85C	150x150	Φ 170	4 - Φ 18	100

**Recommended application:**

Range A: Portable compressors with stepless capacity control from full load to idling  
 Range B: Stationary compressors with stepless control from full load to minimum (approx. 70%) two point control at low air demand.  
 Range C: Two point control, either full load or idling  
 The diagram shows the pressure drop  $\Delta P$  within the suction control valve at full load, including the pressure loss caused by accelerating ambient air to intake velocity  
 Pressure drops caused by intake air filters and adjacent air lines are not included, since they are dependent on designs selected by the compressor manufacturer.

—— types HF85(型号HF85)  
 - - - types HF65(型号HF65)  
 ····· types HF120(型号HF120)

通径 Nominal diameter	单位(mm)	85
型号 Type		HF85用于常闭进气控制阀 HFO85用于常开进气控制阀
工作压力 Working pressure	bar(g)	最高16 up to 16
温度范围 Temperature range	°C	-20 ~ +90 防止意外停止最高140 suction duct of air end(+140 in case of an emergency stop)
控制参数 control characteristic		对角最大45度 up to 45 opening angle approximately logarithmic
KVA值	m <sup>3</sup> /h	210 . 标准气压下的进气 for air intake from free atmosphere
进气量 Air intake capacity	m <sup>3</sup> /min	压差和理论应用范围请看图 Pressure drop and proposed range of application see diagram
理论容积 Idling capacity		控制片理论钻孔直径为5mm Idle drilling in the control disc d=2mm 1)
尺寸 Dimensions	mm	见安装图 See installation drawing
联接 Connections		压缩机进口法兰 Compressor suction flange: D=150x150 mm F=4 罗丝孔 (直径, 螺距可根据客户的需要订做) F=4 bolt holes(diameter, pitch circle diameter suitable for air type specified in order) 信号压力进口 Signal pressure inlet: E= G 1/8 其它连接尺寸 Additional connections: K= G 1/2 G.W= G 1/4
安装角度 Installation attitude		进气连接角度 With hose coupling facing upwards( ±20° )
伺服气缸 Servo cylinder		HFCA40用于无极控制和二级控制模式进气阀, 弹簧有多种可选用 HFCA40
控制信号 Control signal	bar(g)	平衡弹簧最高压力 用于两级控制 Equivalent spring, maximum pressure: 7for two point 用无极控制(100~0%) 10 for stepless control (100 to 0%) 过滤的空气建议根据DIN ISO8573-1 中的5级标准来选择 recommended compressed air quality according to DIN ISO8573-1 class 5
介质 Medium		油润滑压缩空气, 过滤的空气建议根据DIN ISO8573-1中的5级标准来选择 only pressurized air, filtered recommended compressed air quality according to DIN ISO 8573-1, class 5
材质 Materials		壳体: 铝合金 Housing parts: aluminium alloy 内部零件 铝合金 防腐剂钢材, 钢板, PTFE复合轴承, 氟橡胶密封, 丁苯橡胶垫片 Internal parts Aluminium alloy, corrosion resistant steel, plated steel, PTFE compound bearings, Viton sealings, Perbunane diaphragm
重量 Weight	kg	6.2 . 标准执行, 法兰适配器除外 standard execution without flange adapter

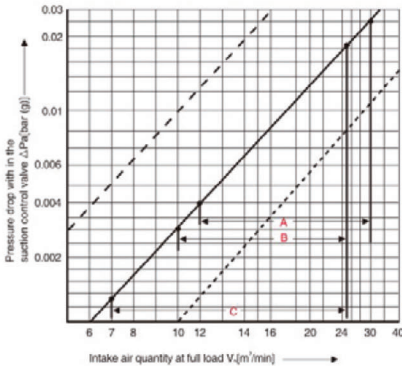
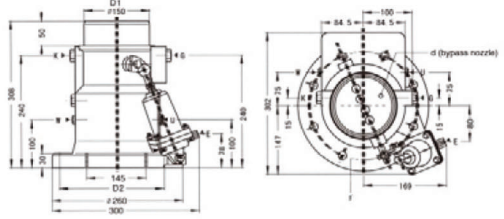




HF120



HFB120

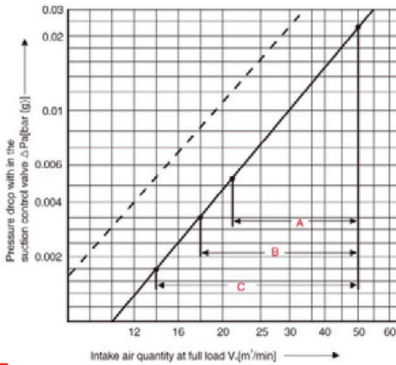
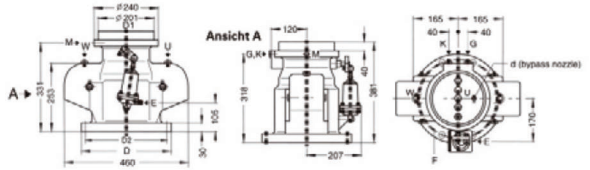


型号 Type	法兰尺寸 Dmm Flange size	安装孔距 Fmm Installation distance	安装孔 4-Φ Mounting holes	空滤接口 D1 Air filter interface
HF-120A	Φ 260	Φ 225	8 - Φ 18	150
HF-120B	Φ 260	Φ 241	8 - Φ 22	150
HF-120B	Φ 260	Φ 225	8 - Φ 22	150

—— types HF40 (型号HF40)  
 - - - types HF50 (型号HF50)

口径 Nominal diameter	单位(mm)	120
型号 Type		HFG120用于常闭进气控制阀 for start-up with suction control valve closed HFO120 用于常开进气控制阀 for start-up with suction control valve open
工作压力 Working pressure	bar(g)	最高16 up to 16
温度范围 Temperature range	°C	-20 ~ +90 防止意外停止最高 140 suction duct of air end(+ 140 in case of an emergency stop)
控制参数 Control characteristic		对角最大45度 up to 45° opening angle approximately logarithmic
KVA值	m³/h	440. 标准气压下的进气 for air intake from free atmosphere
进气量 Air intake capacity	m³/min	压差和理论应用范围请看图 Pressure drop and proposed range of application see diagram
理论容积 Idling capacity		控制片理论钻孔直径为12mm Idle drilling in the control disc = 12mm <sup>①</sup>
尺寸 Dimensions	mm	见安装图 See installation drawing
联接 Connections		压缩机进口法兰 Compressor suction flange F=螺栓孔直径, 螺距可根据客户的需要订购 F=bolt holes(diameter/pitch circle diameter suitable for air type specified in order) 信号压力进口 Signal pressure inlet: E= G 1/8 其它连接尺寸 Additional connections: K= G 1/2 G.W= G 1/4
安装角度 Installation attitude		进气连接角度 With hose coupling facing upwards(+30°)
伺服气缸 Servo cylinder		HFCA40用于无级控制和二级控制蝶式进气阀, 弹簧有多种可选用 HFC40
控制信号 Control signal	bar(g)	平衡弹簧最高压力: 用于两级控制 Equivalent spring, maximum pressure: 7 for two point 用无级控制(100~0%) 10 for stepless control (100 to 0%) 过滤的空气建议根据 DIN ISO8573-1中的5级标准来选择 recommended compressed air quality according to DIN ISO8573-1 class 5 油润压缩空气, 过滤的空气建议根据DIN ISO8573-1中的5级标准来选择 only pressured air filtered recommended compressed air quality according to DIN ISO 8573-1 class 5
介质 Medium		铝座 铝合金 Housing parts: aluminum alloy 内部零件: 铝合金, 防腐剂钢材, 钢板, PTFE混 合轴承, 氟橡胶密封, 丁苯橡胶膜片 Internal parts: Aluminium alloy, corrosion resistant steel, plated steel, PTFE-compound bearings, Viton sealings, Perbunane diaphragm
重量 Weight	kg	12.8

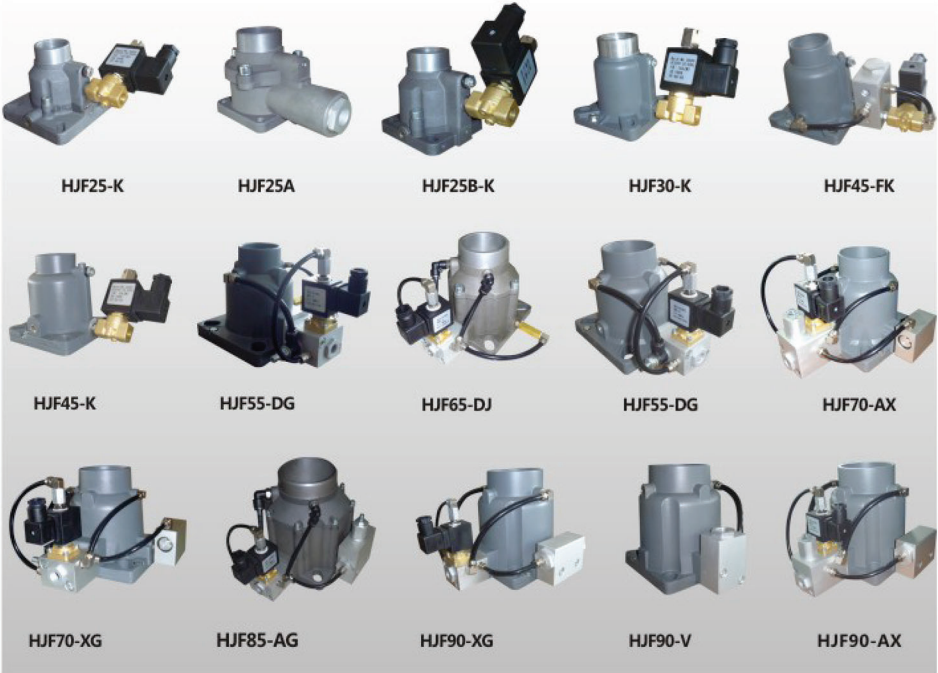




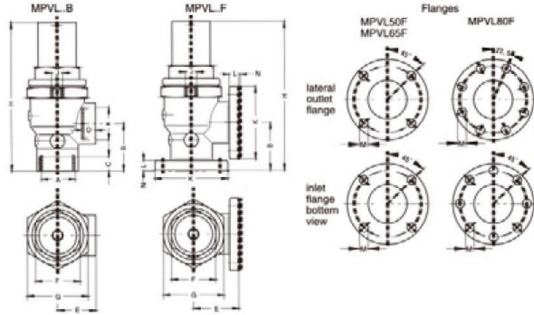
型号 Type	法兰尺寸 Dmm Flange size	安装孔距 Fmm Installation distance	安装孔 4-Φ Mounting holes	空压接口 D1 Air filter interface
HF-160	Φ 340	Φ 295	12 - Φ 18	201
HF-160A	Φ 340	Φ 295	8 - Φ 22	201
HJF-160	Φ 340	Φ 295	8 - Φ 22	201

通径 Nominal diameter	单位(mm)	160
型号 Type		HFG160用于常闭进气控制阀 HFO160用于常开进气控制阀
工作压力 Working pressure	bar(g)	最高16 up to 16
温度范围 Temperature range	°C	-20 ~ +90 防止意外停止最高140 suction duct of air end(+140 in case of an emergency stop)
控制参数 Control characteristic		对角最大45度 up to 45° opening angle approximately logarithmic
KVA值	m³/h	740 标准气压下的进气 for air intake from free atmosphere
进气量 Air intake capacity	m³/min	压差和理论应用范围请看图 Pressure drop and proposed range of application see diagram
理论容积 Idling capacity		控制片理论钻孔直径为12mm1. Idle drilling in the control disc d=12mm <sup>1)</sup>
尺寸 Dimensions	mm	见安装图 See installation drawing
联接 Connections		压缩机进口法兰 Compressor suction flange: D=150x150 mm F= 罗检孔 (直径, 螺距可根据客户的需要订做) F= bolt holes (diameter, pitch circle diameter suitable for air type specified in order) 信号压力进口 Signal pressure inlet: E=G 1/8 其它连接尺寸 Additional connections: K=G 3/4 M,U,W= G 1/4
安装角度 Installation attitude		进气连接角度 With hose coupling facing upwards( ±20°)
伺服气缸 Servo cylinder		HFCA40用于无级控制和二级控制蝶式进气阀, 弹簧有多种可选用 HFCA40 for stepless control of the butterfly type control valve springs for different characteristics available
控制信号 Control signal	bar(g)	等效弹簧, 最大压力: 7-2点控制, 10级无级变速控制 Equivalent spring, maximum pressure: 7 for two point control 10 for stepless control 过滤的空气建议根据DIN ISO8573-1中的5级标准来选择 recommended compressed air quality according to DIN ISO 8573-1, class 5
材质 Materials		阀座: 铝合金 Housing parts: aluminium alloy 内芯零件: 铝合金, 防腐不锈钢, 碳钢, PTFE混合轴承, 氟橡胶密封, 丁苯橡胶膜片 Internal parts: Aluminium alloy, corrosion resistant steel, plated steel, PTFE-compound bearings, Viton sealings, Perbunane diaphragm
重量 Weight	kg	25 or 27.5, depending on flange diameter D 25-27.5由法兰直径决定

**Application:** Inlet valves installs the compressor that control the discharge rate, when operating, the contral signal contrals to start up or closing of the inlet valves to meet the needs of the air.It can Promise or two control

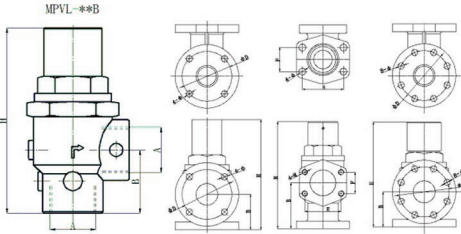


Parameters 型号 Type	法兰尺寸D(mm) Flang size	安装孔距F(mm) Installation distance	安装孔4-Φ Mounting holes	空滤接口D1(mm) Air filter interface	口径(mm) Nominal diameter	推荐流量(m <sup>3</sup> /min) Recommened capacity	工作压力(bar) Working pressure
HJF25	100X100	Φ100/Φ116.8	4-8.5腰孔	Φ40	25	1	≤25
HJF25A	68X68	Φ75	4-Φ7	Φ40	25	1	≤25
HJF25B	75X80	53X53/62X55	4-10.5腰孔	Φ40	25	1	≤25
HJF30	80X80	Φ87/Φ77	4-8腰孔	Φ40	25	1	≤16
HJF45	100X100	Φ100/Φ115	4-9或11腰孔	Φ48和Φ50	40	2	≤16
HJF45A	120X120	Φ120/Φ135	4-9或11腰孔	Φ48和Φ50	40	2	≤16
HJF45B	135X135	Φ135/Φ160	4-11或13腰孔	Φ48和Φ50	40	2	≤16
HJF55	135X135	Φ135/Φ150	4-17腰孔	Φ60	50	3	≤16
HJF65W	150X150	Φ143/Φ170	4-17腰孔	Φ78	65	6	≤25
HJF70	150X150	Φ143/Φ170	4-17腰孔	Φ75或Φ78	65	6	≤16
HJF85	158X158	Φ160/Φ180	4-17腰孔	Φ98	85	10	≤25
HJF90	150X150	Φ160/Φ170	4-17腰孔	Φ100	85	10	≤16
HJF110	150X150	Φ150/Φ170	4-17腰孔	Φ126	110	16	≤25



Dim	MPVL15	MPVL20	MPVL25	MPVL32	MPVL40B	MPVL50B	MPVL50F	MPVL65B	MPVL65F	MPVL80F
A	G1/2	G3/4	G1	G1 1/4	G1 1/2	G2	-	G2 1/2	-	-
B	43	50.5	56.5	67.5	67.5	78	100	93	103	125
C	13	15	15	20	20	24	-	27	-	-
D	13	15	15	20	20	24	-	27	-	-
E	31	36	42.5	48	55	66	120	76	150	125
F	36	46	55	50	65	85	85	95	95	115
G	46	55	65	70	35	100	100	130	130	145
H	110	124	138	175	214	240	262	317	321	389
J	-	M5	M5	M8	M8	M10	M10	M10	M10	M12
K	-	-	-	-	-	-	165	-	185	190.5
L	-	-	-	-	-	-	22	-	24	24
M	-	-	-	-	-	-	4X $\phi$ 18 TK $\phi$ 125	-	4X $\phi$ 18 TK $\phi$ 145XB	$\phi$ 18 TK $\phi$ 150
N1	-	-	-	-	-	-	-	-	-	2

型号 Type		MPVL15	MPVL20	MPVL25	MPVL32	MPVL40B	MPVL50B	MPVL50F	MPVL65B	MPVL65F	MPVL80F
口径 Nominal diameter	mm	15	20	25	32	40	50	50	65	65	80
连接 Connections1)		G1/2	G3/4	G1	G1 1/4	G1 1/2	G2	-	G2 1/2	-	-
法兰设计荷载 Flange design Connections		-	-	-	-	-	-	G2	-	G2 1/2	G3
重量 Weight	kg	0.35	0.45	0.8	1.1	1.5	3.3	5.7	5.8	9.5	13
降全开QVA值	m <sup>3</sup> /h	4	5.5	9	15	24	40	40	64	64	100
压缩空气 intake capacity 进气量 of the compressor	m <sup>3</sup> /min	Recommended application range for pressure losses from 0.03 to 0.2 bar(g) 建议的适用范围为压力损失从 0.03 至 0.2 bar(g)									
压缩空气 discharge pressure 排气压力 of the compressor	bar(g)	5 to 16 5-6									
介质 Medium		pressurized air, filtered, recommended compressed air quality according to DIN ISO 8573-1 class 5 加压空气, 过滤的空气, 建议根据 DIN ISO 8573-1 中的 5 级标准来选择									
开启 Start of opening3)	bar(g)	3 to standard settings (正负 0.25 bar) : 3.5 and 4.75 3-5 标准设置 (正负 0.25 bar) : 3.5 和 4.75									
全开 Fully opening1)	bar(g)	opening pressure plus 1.5 to 2 开启的压力, 再加上 1.5 到 2									
关闭 Closed at3)	bar(g)	opening pressure minus 0.5 to 1 开启的压力, 减 0.5 至 1									
温度范围 Temperatur	°C	0 to 100 short periods: -25 +130 emergency stop (max 10% work period at max) 0-100 短时: -25, 130 紧急停止 (其他根据需求定做)									
安装尺寸 Installation dimensions	mm	see dimension table, others upon request 见尺寸表, 其他应要求									
安装角度 Installation attitude		optional 可选									
材质 Material		Aluminum alloy, Steel, Viton/NBR/PTFE 铝合金, 钢, Viton/NBR/PTFE 密封									



型号 Type	口径(mm) Nominal diameter	连接法式 Connection	进口 A或2-ΦTKΦK Inlet	出口 A或2-M*TKΦK1 Outlet	总长(mm) H Total Length	出口高度(mm) H The height of the outlet	最大使用流量 Recommend the maximum flow
MPVL-15B	15	内螺纹连接 Internal Thread Connection	G1/2	G1/2	74	32.5	1.5 ≤
MPVL-15BF	15	内螺纹+法兰连接 Internal thread connection+Flange connection	2-Φ10.5*TKΦ53	G1/2	74	32.5	1.5 ≤
MPVL-15WF	15	外螺纹+法兰连接 External thread connection+Flange connection	2-Φ10.5*TKΦ53	M24X1.5-6g	74	32.5	1.5 ≤
MPVL-20B	20	内螺纹连接 Internal Thread Connection	G3/4	G3/4	94	41	2.5 ≤
MPVL-20BF	20	内螺纹+法兰连接 Internal thread connection+Flange connection	2-Φ10.5*TKΦ67	G3/4	98	40	2.5 ≤
MPVL-20WF	20	外螺纹+法兰连接 External thread connection+Flange connection	2-Φ10.5*TKΦ67	M33X2-6g	98	40	2.5 ≤
MPVL-25B	25	内螺纹连接 Internal Thread Connection	G1	G1	120.5	55.5	4.3 ≤
MPVL-25F	25	法兰连接 Flange Connection	2-Φ10.5*TKΦ67	2-M10*TKΦ60	124	60	4.3 ≤
MPVL-25BF	25	内螺纹+法兰连接 Internal thread connection+Flange connection	2-Φ10.5*TKΦ67	G1	124	60	4.3 ≤
MPVL-25WF	25	外螺纹+法兰连接 External thread connection+Flange connection	2-Φ10.5*TKΦ67	M42X2-6g	124	60	4.3 ≤
MPVL-25T	25	外螺纹连接 External thread connection	Rc1 1/4	M36X2-6g	130.5	64	4.3 ≤
MPVL-32B	32	内螺纹连接 Internal Thread Connection	G1 1/4	G1 1/4	153	66	8 ≤
MPVL-32F	32	法兰连接 Flange Connection	2-Φ10.5*TKΦ78	2-M10*TKΦ73	153	70	8 ≤
MPVL-32BF	32	内螺纹+法兰连接 Internal thread connection+Flange connection	2-Φ10.5*TKΦ78	G1 1/4	153	70	8 ≤
MPVL-32WF	32	外螺纹+法兰连接 External thread connection+Flange connection	2-Φ10.5*TKΦ78	M52X2-6g	153	70	8 ≤
MPVL-32T	32	外螺纹连接 External thread connection	Rc1 1/2	M52X2-6g	160	72	8 ≤

型号 Type	口径(mm) Nominal diameter	开启压力(bar) Opening pressure	最高压力(bar) Max pressure	连接法式 Connection	进口 Inlet	出口 Outlet	总长(mm) H Total Length	底部到出口距离(mm) The distance from the bottom to the outlet	最大使用流量 Recommend the maximum flow
MPVL-40B	40	3.5~4.0	≤25	内螺纹连接 Internal thread connection	G1 1/2	G1 1/2	196	67	≤10
MPVL-50B	50	3.5~4.0/7.5	≤16	内螺纹连接 Internal thread connection	G2	G2	240	77	≤15
MPVL-50F	50	3.5~4.0	≤16	法兰连接 Flange Connection	4-Φ18*TKΦ125	4-Φ18*TKΦ125	249/263	100	≤15
MPVL-50T	50	0.25/3.5~4.0	≤25	法兰连接 Flange Connection	4-Φ19*118X83	4-M16*93X60	215	59	≤15
MPVL-65F	65	3.5~4.0/7.0/12	≤16	法兰连接 Flange Connection	4-Φ18*TKΦ145 8-Φ18*TKΦ145	4-Φ18*TKΦ145 8-Φ18*TKΦ145	321/360/288	102	≤27
MPVL-65D	65	3.5~4.0	≤16	法兰连接 Flange Connection	4-Φ18*106.5X62	4-M12*89X51	278	96	≤27
MPVL-65T	65	3.5~4.0	≤25	法兰连接 Flange Connection	4-Φ20*120.5X70	4-M16*106X62	311	133	≤27
MPVL-85F	85	3.5~4.0	≤16	法兰连接 Flange Connection	8-Φ18*TKΦ160	8-Φ18*TKΦ160	389	125	≤42
MPVL-85D	85	3.5~4.0	≤16	法兰连接 Flange Connection	4-Φ18*150X70	4-M16*130X70	247	132	≤42
MPVL-100D	100	3.5~4.0	≤25	法兰连接 Flange Connection	4-Φ18*152.5X92	4-M16*130X78	278	144	≤60





HC-20



HC-25



HC-40

型号 Type	额定流量 Capacity (m <sup>3</sup> /min)	使用压力 Working pressure (bar)	混合油气进口法兰 Connection of blocked inlet	最小压力阀出口 螺纹 (法兰) Outlet of minimum pressure	油分接头螺纹 separator connection
HC-20	2	≤16	4-φ9-67×64 (4-M12)	G $\frac{3}{4}$	M24×1.5 M22×1.5
HC-25	3~5.5	≤16	4-φ10.5-101×101 (4-M12)	G1 $\frac{1}{4}$	M39×1.5
HC-40	11	≤16	7-φ12.5(4-M12)	4-M12-35.7×70	M32×1.5 M39×1.5



VC-20



VC-25

型号 Type	VC-20	VC-25
额定流量 Capacity (m <sup>3</sup> /min)	2	3~5.5
使用压力 Working pressure (bar)	16≤	16≤
进油口 Inlet	G $\frac{1}{2}$	G $\frac{3}{4}$
出油口 Outlet	G $\frac{1}{2}$	G $\frac{3}{4}$
混合油气进口法兰 (螺纹) Connection of blocked inlet	4-φ9-Tkφ60	4-φ9-Tkφ60
最小压力阀出口螺纹 Outlet of minimum pressure valve	G $\frac{3}{4}$	G1 $\frac{1}{4}$
油滤接头螺纹 Oil filter connection	1-12UNF	1-12UNF
油分接头螺纹 separator connection	M24x15	M39x15



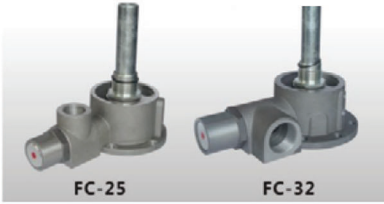
VD-20



VD-25

型号 Type	VD-20	VD-25
流量 Capacity(m <sup>3</sup> /min)	15	5.5
油量 Flow rate(L/min)	45	80
油进出口孔径 Oil inlet size	G1/2	G3/4
出气口孔径 Outlet size	G1/2	G1 1/4
油滤接头 Filter size	1-12UNF3/4-16UNF	1-12UNF3/4-16UNF
油分接头 Oil separator size	M22 X 1.5M24 X 1.5	M29 X 1.5M32 X 1.5
工作温度范围 Temperature(°C)	55-70,71-85,83-95	
材料 Material	铝aluminum	





型号 Type	FC-25	FC-32
额定流量 Capacity(m <sup>3</sup> /min)	3-5.5	6
使用压力 Working pressure(bar)	≤ 16	≤ 16
混合油气进口法兰 Connection of blocked inlet	6-φ9-TKφ124	7-φ14-TKφ145
最小压力阀出口螺纹 (法兰) Outlet of minimum pressure valve	G1	G1
油分接头螺纹 Separator connection	M32×1.5, M39×1.5"	M39×1.5"

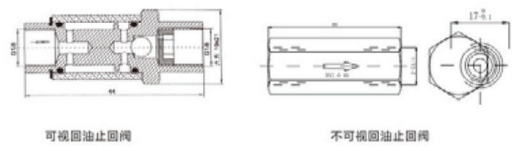
型号 Type	额定流量 Capacity (m <sup>3</sup> /min)	使用压力 Working pressure (bar)	进油口 Inlet	出油口 Outlet	混合油气进口法兰 (螺纹) Conne-ction of blocked inlet	最小压力阀出口螺纹 Outlet of minimum pressure	油液接头螺纹 Oil filter connection	油分接头螺纹 Oil separator connection
VC-20	2	16 ≤	G $\frac{1}{2}$	G $\frac{1}{2}$	4-φ9-TKφ60	G $\frac{3}{4}$	1-12UNF	M24×1.5
VC-25	3-5.5		G $\frac{3}{4}$	G $\frac{3}{4}$	4-φ9-TKφ60	G1 $\frac{1}{4}$	1-12UNF	M39×1.5

### Oil Filters Seat RL-RLT Series



型号 Type	连接方式 Connection	进口 Connection	出口 Outlet	油液接口 Oil filter connection	使用压力 Working pressure (Bar)
RL-6	螺纹 threaded	G $\frac{3}{4}$	G $\frac{3}{4}$	1-12UNF 3/4-16UNF	≤16
RL-8	螺纹 threaded	G1	G1	1-12UNF	≤16
RL-10	螺纹 threaded	G1 $\frac{1}{4}$	G1 $\frac{1}{4}$	1 $\frac{1}{2}$ -16UN	≤16
RLT-8	螺纹 threaded	G1	G1	1-12UNF	≤16
RLT-10	螺纹 threaded	G2	G2	1 $\frac{1}{2}$ -16UN	≤16
RLT-10	法兰 flange	4 M12-77.75x42.9	4 M12-77.75x42.9	1 $\frac{1}{2}$ -16UN	≤16
RLT-15	法兰 flange	4 M12-88.9x50.8	4 M12-88.9x50.8	1 $\frac{1}{2}$ -16UN	≤16

### Non Return Valve HKS-HV-HT Series



型号 Type	HKS-0.6	HKS-0.8	HKS-1.0	HKS-1.2	HKS-1.5	HKS-2.0	HKS-2.5	HKS-3.0
通径 Nominal diameter DN	0.6mm	0.8mm	1.0mm	1.2mm	1.5mm	2.0mm	2.5mm	3.0mm

型号 Type	HV-0.6	HV-0.8	HV-1.0	HV-1.2	HV-1.5	HV-2.0		
1/8通径 nominal diameter	0.6mm	0.8mm	1.0mm	1.2mm	1.5mm	2.0mm		

型号 Type	HT-0.8	HT-1.0	HT-1.2	HT-1.5	HT-2.0	HT-2.5	HT-3.0
1/4通径 nominal diameter	0.8mm	1.0mm	1.2mm	1.5mm	2.0mm	2.5mm	3.0mm

Manufacturer Part of Screw Compressor



**ARNIKA**  
— COMPANY —

**TRYCOMP**  
Heavy Duty

WWW.ARNIKACO.COM  
CUMHURİYET MAHALLESİ 1991. SOKAK  
BEYCENTER REZİDANS, NO:2/94  
PK.34515, ESENYURT - İSTANBUL  
TEL: +90 212 852 5211  
info@arnikaco.com